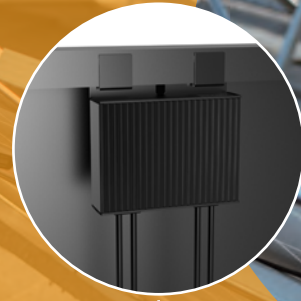


PV Back



Smart Optimizer & Monitoring SUNGO iOPT 800W

www.sungoess.com
E-mail: sales@sungoess.com



Data Gateway(GT)

Features

Shield Safety

Module-level automatic rapid shutdown, ensuring fire and maintenance safety

Intelligent Management

Module-level data intelligent monitoring, One App to Manage the PV power plant

Optimize Power Generation

Module-level MPPT ensures optimal performance regardless of shadows, malfunction, etc, resulting in a remarkable power generation increase of 5%-30%

Flexible Use

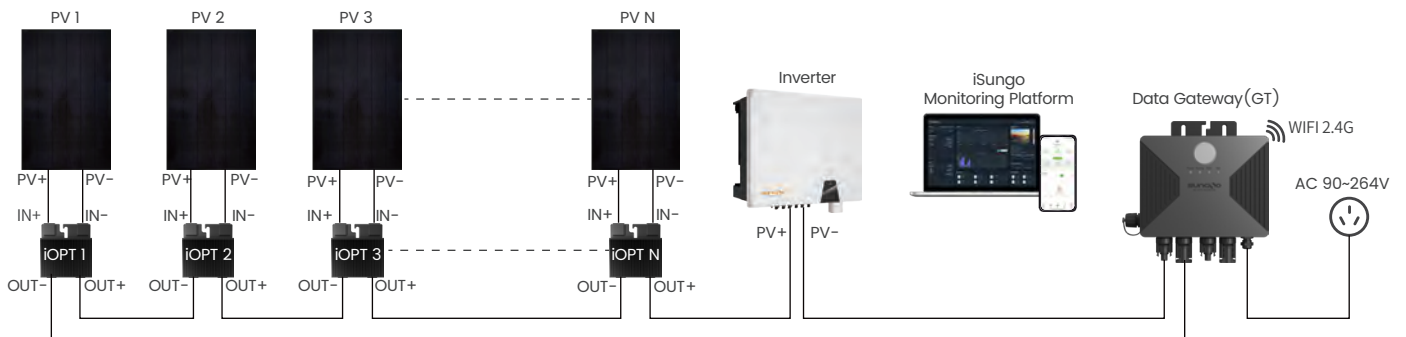
Matching mainstream PV modules and various inverters for worry-free installation of PV power plants in operation and under construction

Advanced MPPT Algorithm

The MPPT algorithm is not only advanced but also boasts rapid calculation speeds, resulting in efficiency levels exceeding 99.5% and peaking at 99.7%

Quality Warranty

12-year standard warranty, high stability, service life over 25 years



Optimizer Connection Diagram

Optimizer Technical Parameters

Model	SUNGO iOPT 800W
DC Input	
Max input power	800W
Max voltage	70V
MPPT voltage range	12~60V
Max continuous input current	21A
Max input short-circuits current	23A
Night self-consumption	0W
DC Output	
Output voltage	0~60V
Max continuous output current	21A
Max output power	780W
Max system voltage	1500V
DC Output During Shutdown	
Output voltage (without SUNGO GT)	1±0.1V
Efficiency	
Peak MPPT efficiency	≥99.7%
Communication	
Communication Method	PLC
Communication parameter	PV Voltage, Output Voltage, Output Current, Output Power, Temperature, State
Advanced Protection	
Input overvoltage protection	>75V
Output overcurrent protection	>22A
Output overload protection	>800W
High temperature protection	>110 C
General Data	
Dimensions (W*D*H)	116*31.5*123mm
Weight	0.865kg
Input/output cable length	IN+ 200 / IN- 1100 / OUT+ 750 / IN- 750mm
Input/output cable size	4mm ² (12AWG) / 4mm ² (12AWG)
Terminals	MC4(Compatible)
Protection rating	IP68
Relative humidity	0~100%RH
Operating temperature range	-40~+65°C
Cooling	Natural cooling
Certification	CE
Packaging	28pcs/CTN 840pcs/pallets

Data Gateway Technical Parameters

Model	SUNGO GT
Match with	SUNGO iOPT 800W
AC Input Parameters	
AC input voltage range	90~264V
AC Input frequency	50/60Hz
Maximum AC input power	5W
Maximum AC input current	0.1A@90Vac
PV Input Parameters	
Terminals	MC4(Compatible)
Maximum system voltage	1500V
Nos of input strings	2
Max current of each string	21A
Max Module Nos per string	30
Communication Method	
Communication with optimizer	PLC
Communication with upper machine	2.4GHz Wi-Fi / RS485
Rapid Shutdown	
Initial state	1. OFF when AC is not connected 2. ON when AC is connected
Switch-on	Press the button once until the Running light is on
Switch-on time	<5s
Shut-down	1. Press the button once until the RSD indicator lights up 2. Controller AC power off, all indicator lights off
Shut-down time	<30s
Standards	
Electromagnetic compatibility (EMS)	IEC61000-6-1, IEC61000-6-2, IEC61000-6-3
Safety	IEC62109-1
RoHs	Yes
Installation Specification	
Dimension (W*D*H)	140*33.5*175mm
Weight	0.88kg
AC input cable length	1m
Protection level	IP67
Working temperature range	-40~+70°C
Cooling	Natural cooling
Form of installation	Wall hanging/holding, screw locking
Certification	CE
Packaging	5pcs/CTN 40pcs/pallets